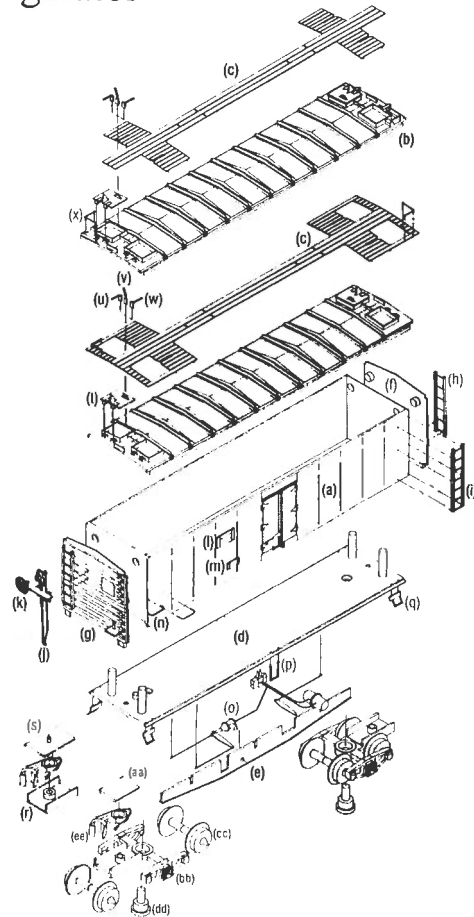


InterMountain Railway Company

P.O. Box 839 Longmont, CO 80502 Phone: (800) 472-2530 Fax: (303) 772-8534

Santa Fe Refrigerator Car



Recommended Tools
X-acto Knife Fine Clippers Tweezers
Small File or Emery Board Pin Vice
Small Drill Set Liquid Styrene Cement

Parts List:

1. Body (a)
2. Roof (b)
3. Roofwalk (c)
4. Floor (d)
5. Underframe (e)
6. End Sprue:
"A" end (f)
"B" end (g)
7. Ladder Sprue:
2 End Ladder (h)
2 Side Ladder (i)
Brake Housing & Air Lines (j)
Brake Wheel (k)
4 Large Tack Board (l)
2 Small Tack Board (m)
8 Grab Iron (n)
8. Brake Detail Sprue:
Brake Detail Assembly (o)
3 Center Stirrup (p)
6 Corner Stirrup (q)
9. Body Mount Coupler Boxes:
2 Coupler Box (r)
2 Coupler Box Cover (s)
10. Hatch Sprue:
4 Hatch Cover (t)
5 Hatch Latch - Closed (u)
5 Hatch Latch - Partly Open (v)
5 Hatch Latch - Open (w)
2 Roofwalk Grab Iron (x)
11. Truck Pack:
2 Coupler Box Cover (aa)
2 Truck (bb)
4 Wheel Set (cc)
2 Truck Mounting Pin (dd)
2 Coupler (ce)

N-Scale Santa Fe Refrigerator Car GENERAL INSTRUCTIONS

Please read all instructions and study the drawings and parts before beginning assembly of this kit! Many of the parts are very delicate in order for your completed model to be as attractive and authentic as possible. **DO NOT ATTEMPT TO BEND, TWIST, OR BREAK PARTS FROM SPRUE.** The most effective tools to use in removing parts from their sprue are an x-acto knife, fine clippers, or sharp, single edge razor blade.

It is best to test fit ALL PARTS before applying glue. The locators sometimes are slightly damaged in removing them from the runner and must be trimmed before the locator holes will accept them. It may be helpful to open locator holes with a #75 drill bit. Generally very small amounts of glue are needed to affix styrene parts, so we recommend that glue be used sparingly.

The connecting point between the part and the "runner" to which it is attached is called a "gate". The gates are designed to be trimmed completely flush with the part except in those cases where the part itself is used as the gate.

ASSEMBLY INSTRUCTIONS

Step 1: Completion of Body

Add ends to Body (a). Please note that locator pins on Ends (f) & (g) and locator holes in body provide for ends to be installed correctly. When ready, glue in place. Once ends are in place, prepare and install the following: End Ladders (h), Brake Housing and Air Lines (j), Brake Wheel (k), End Grab Irons (n), and Large Tack Boards (l).

Install the following parts to the Floor (d) before attaching floor to body: Underframe (e), Brake Detail Assembly (o), Center Stirrups (p), and Corner Stirrups (q). The corner stirrups are slightly offset from their locator pins. Install the corner stirrups so that the stirrup is closest to the end of the car. When ready, glue assembled floor to body noting that the locator pin on floor and locator hole in body allow installation in only one direction. (Note: Center stirrup locators may have to be trimmed slightly to keep from interfering with placement of floor on body.)

Step 2: Preparation and installation of Roof

Prepare Roof (b) by installing Hatch Covers (t) and Hatch Cover Latches (u), (v) & (w), Roofwalk (c), and Roofwalk Grab Irons (x). Please note that there are two left-hand and two right-hand hatch covers. They are to be installed with the molded on "handle" closer to the long roofwalk. There are also three sets of hatch cover latches as set out in the parts list. It is recommended that the hatch covers be installed in the closed position. Be sure to remove all of the "gate" from the hatch cover latch where it attaches to the runner. There is a small "box" adjacent to the hatch opening into which the end of the part is glued in place. Roofwalk should be glued in place prior to adding hatch cover latches.

Step 3: Installation of Body Details

Glue in place the following body details: Side Ladders (i), side grab irons, two large tack boards, and two small tack boards (m). The illustration shows a generic location for tack boards. It is recommended that you refer to prototype pictures for tack board locations for the model you are building.

Step 4: Trucks and Couplers

Place Couplers (ce) in coupler boxes and retain by press fitting Coupler Box Covers (aa). Add Wheel Sets (cc) to Truck Assemblies (bb). Attach truck assemblies to car using Truck Pins (dd). (Note: Optional Coupler Boxes (r) & (s) have been included in the parts to body mount the couplers if desired. If trucks are to be body-mounted, the coupler box on the truck must be removed.)

Your model is now complete and ready to put into service on your rail empire. **IF YOU FIND THAT A PART IS MISSING OR DEFECTIVE, OR IF YOU SHOULD LOSE OR BREAK A PART, PLEASE CONTACT US FOR A REPLACEMENT.**