

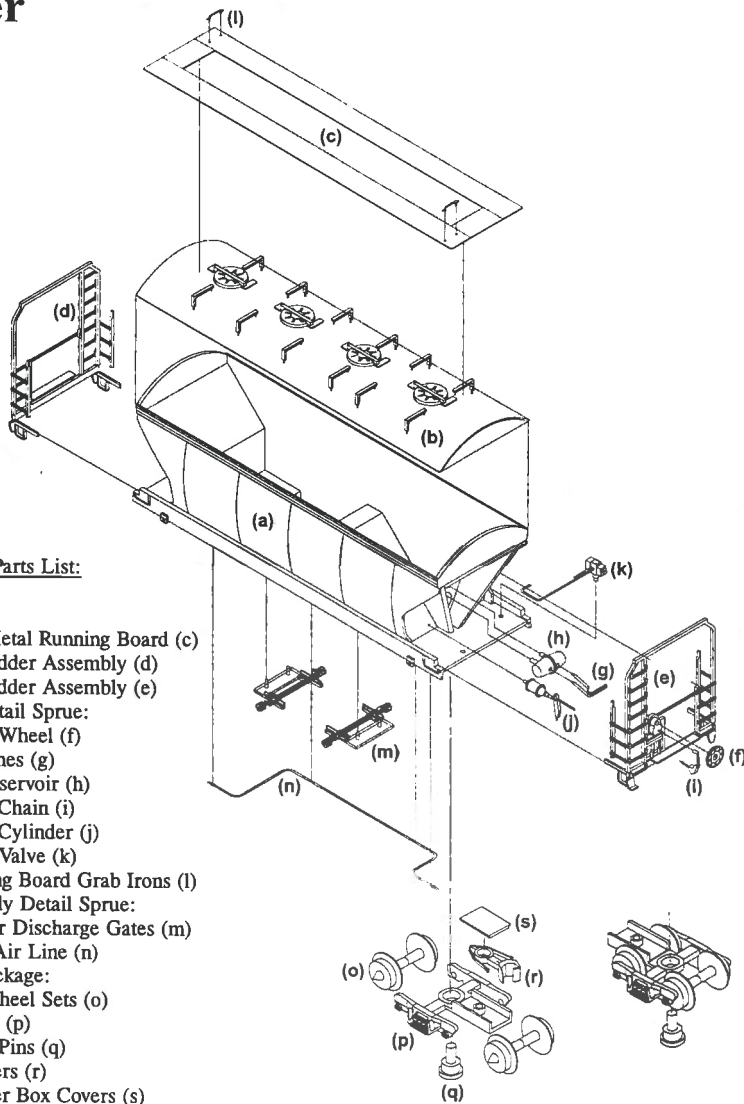
# InterMountain Railway Company

P.O. Box 839 Longmont, CO 80502 Phone: (303) 772-1901 e-mail: intermountain@sni.net

## N-Scale ACF Center Flow 2-Bay Hopper

### Recommended Tools:

X-acto Knife Fine Clippers Tweezers  
Small File Pin Vise Small Drill Set  
Liquid Styrene Cement  
Super Glue, "Zap-A-Gap" or Equivalent



### Parts List:

1. Body (a)
2. Roof (b)
3. Etched Metal Running Board (c)
4. A-end Ladder Assembly (d)
5. B-end Ladder Assembly (e)
6. Brake Detail Sprue:
  - Brake Wheel (f)
  - Air Lines (g)
  - Air Reservoir (h)
  - Brake Chain (i)
  - Brake Cylinder (j)
  - Triple Valve (k)
  - Running Board Grab Irons (l)
7. Underbody Detail Sprue:
  - Hopper Discharge Gates (m)
  - Long Air Line (n)
8. Truck Package:
  - 36" Wheel Sets (o)
  - Trucks (p)
  - Truck Pins (q)
  - Couplers (r)
  - Coupler Box Covers (s)

N-Scale ACF Center Flow 2-Bay Hopper

### GENERAL INSTRUCTIONS:

Please read all instructions and study the drawings and parts before beginning assembly of this kit! Many of the parts are very delicate in order for your completed model to be as authentic as possible. DO NOT ATTEMPT TO BEND, TWIST, OR BREAK PARTS FROM THEIR SPRUE. The most effective tools to use in removing parts from their sprue are an X-acto knife or fine clippers.

It is best to test fit ALL PARTS before applying glue. The locators sometimes are slightly damaged when removed from the runner and must be trimmed before the locator holes will accept them. It is recommended that all locator holes be cleaned out with a small drill (#72 or smaller) before test fitting parts. Generally, small amounts of glue are needed to affix styrene parts, so we suggest you use glue sparingly.

The connecting point between the part and the "runner" is a "gate". The gates are designed to be trimmed completely flush with the part, except when the part itself is used as the gate.

One of the most important aspects of building this kit is the assembly sequence. The following sequence is suggested only. After building a few of these cars you will no doubt devise your own method.

### ASSEMBLY INSTRUCTIONS:

#### Step 1: Assembly of Brake Detail

Be sure to test fit parts after removing them from the sprue before final installation. Install the Air Reservoir (h) to the brake end of the Body (a) of the car using the two locator holes near the center of the car end. There are two locator holes in the platform on the brake end of the car. Be sure that they are cored through the platform. Install the Brake Cylinder (j) using the two locator holes provided just to the left of the center of the car, one on the car end and one on the platform. Put the Triple Valve (k) in place using the single locator hole on the left side of the platform. The J-shaped airline coming out of the triple valve extends across the platform and above the brake cylinder. The end of the airline should be glued to the car end just above the brake cylinder. The short Air Lines (g) are to be located in the two locator holes in the air reservoir. The joined end of the air lines then locate on top of the line extending from the triple valve.

#### Step 2: Ends and End Details

Install the A-end (d) and the B-end (e) making sure that the B-end is installed on the same end as the brake detail. Each of the ends can be easily located by placing the extensions at the bottom of the end inside the braces under the platform. The free upper ends of the ladder braces go inside the car sides. Install the Brake Chain (i) using the locator hole just below the Brake Wheel (f). Install the brake wheel in its locator hole.

#### Step 3: Underbody Details

Install the Long Air Line (n) using the four locator holes on the bottom of the car. Install the Hopper Discharge Gates (m) referring to drawing for correct orientation of the parts.

#### Step 4: Weights

If you are going to weight your car, do so now before the roof is put in place. (NMRA standard weight for this car is .65 oz. This requires that .30 oz. of weight be added.) Weight should be fastened into the car body with "Goo" or similar adhesive. Styrene cement will not hold weights in the car.

#### Step 5: Roof and Roof Detail

Test fit Roof (b) to body and glue in place. Install Running Board (c) using "Zap-A-Gap" or similar adhesive. Remove Running Board Grab Irons (l) from the parts sprue and install on the running board. "Zap-A-Gap" or similar adhesive must be used to affix plastic parts to the etched metal running board.

#### Step 6: Trucks and Couplers

Place Couplers (r) in coupler boxes on Trucks (p) and retain by press fitting Coupler Box Covers (s). Add Wheel Sets (o) to trucks and attach to car using Truck Pins (q).

Your model is now complete and ready to put into service on your rail empire. If you find that a part is missing or defective, or if you should lose or break a part, please contact us for a replacement.